



# Introduction To iCERP by NEXUSsoft

# About Us

- In business since 2003
- Not just developers
- We deliver individually crafted ERP solutions (iCERP) for businesses with complex requirements
- We're not for everyone and that's ok

```
mirror_mod = modifier_ob.  
set mirror object to mirror.  
mirror_mod.mirror_object  
operation == "MIRROR_X":  
mirror_mod.use_x = True  
mirror_mod.use_y = False  
mirror_mod.use_z = False  
operation == "MIRROR_Y":  
mirror_mod.use_x = False  
mirror_mod.use_y = True  
mirror_mod.use_z = False  
operation == "MIRROR_Z":  
mirror_mod.use_x = False  
mirror_mod.use_y = False  
mirror_mod.use_z = True  
  
selection at the end -add  
mirror_ob.select= 1  
modifier_ob.select=1  
context.scene.objects.active  
("Selected" + str(modifier_ob.  
mirror_ob.select = 0  
= bpy.context.selected_object  
data.objects[one.name].select  
  
print("please select exactly  
  
-- OPERATOR CLASSES --  
  
types.Operator):  
X mirror to the selected  
object.mirror_mirror_x"  
mirror X"  
  
context):  
context.active_object is not
```

# About iCERP by NEXUSsoft



iCERP is built on our NEXUSascent framework



iCERP can capture any logical process.



iCERP can be hosted on premise or in the cloud



iCERP can integrate with any API



iCERP has predictable costs





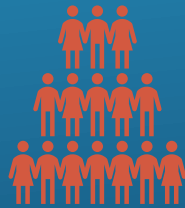
# About Our Customers

- They are a bit different to their competitors
- They operate across multiple industry verticals, or as vertically integrated businesses in one or more industries
- They tried templated ERP solutions
- They can expand, adapt and change and iCERP will expand, adapt and change with them
- iCERP is their secret weapon

# What Symptoms Can We Help With?



Disconnected systems



Having extra staff just to exist



Lack of controls



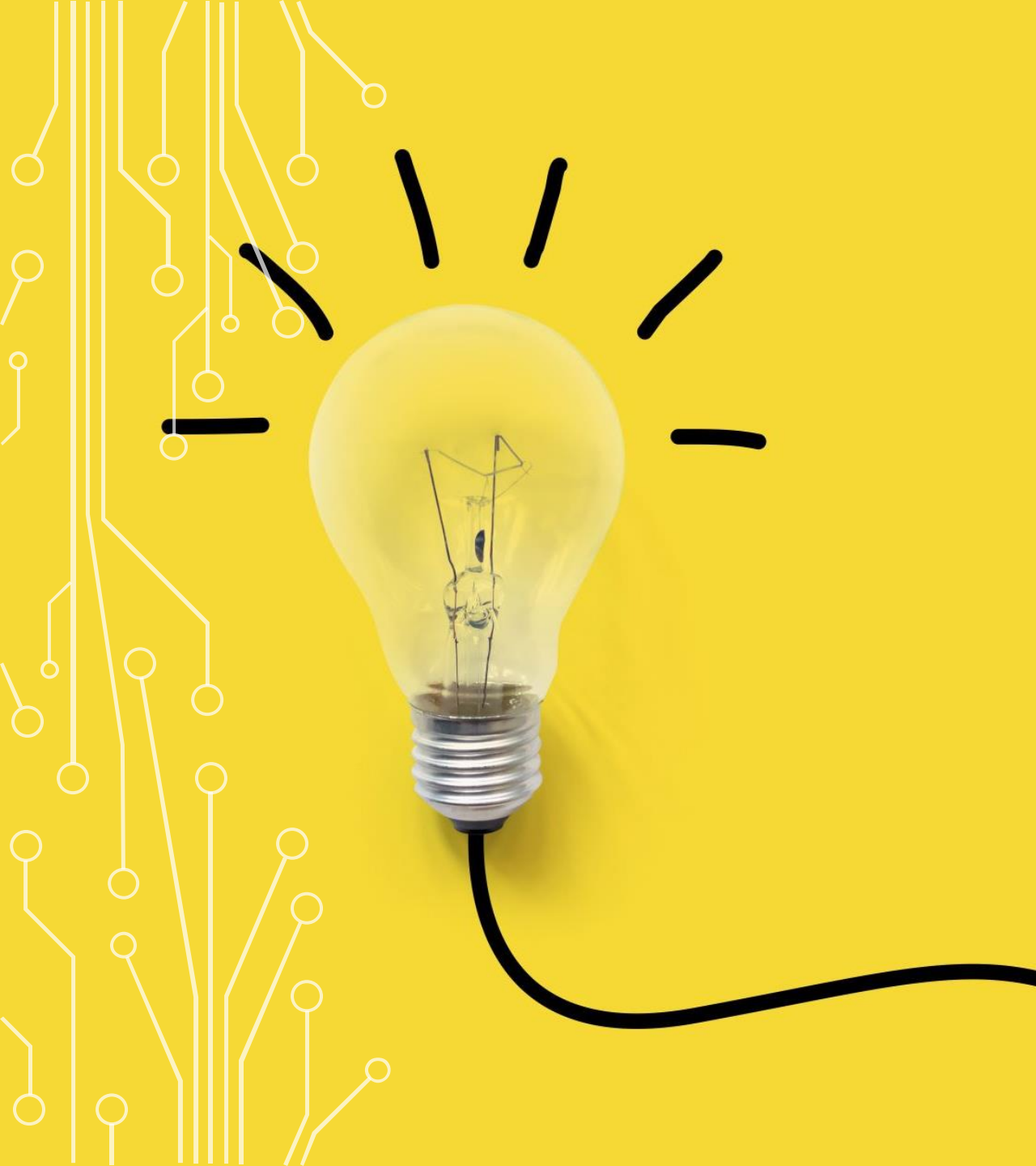
No efficiencies of scale



Lack of data



Using Excel



## What we know

- Choose the wrong ERP system and you can blow your money
- Any solution must always reflect your desired business processes accurately
- There must be commitment from management and staff to engage
- Iteration leads to Success



A decorative graphic on the left side of the slide. It features a dark blue background with a white circuit board pattern of lines and circles. In the lower half, there is a blurred image of an open book with white pages.

## Challenges and Success Factors of ERP Systems in Australian SMEs (Venkatraman & Fahd 2016)

### Top Barriers to Implementation

Customisation related challenges	40%
Redesigning business processes	39%
Training	39%
Cost of upgrades / updates	33%
Lack of flexibility regarding processes	28%

The background image is a composite of financial data visualizations. It features a pie chart with approximately 12 segments in various colors (blue, green, brown, grey). Above the pie chart is a bar chart with months labeled 'Jun', 'Jul', 'Aug', 'Sep', 'Oct', 'Nov', and 'Dec'. Below the pie chart is a table with numerical values. A black pen is positioned diagonally across the bottom left of the image. The entire image is overlaid with a white circuit-like pattern of lines and nodes.

## Challenges and Success Factors of ERP Systems in Australian SMEs (Venkatraman & Fahd 2016)

- Most SMEs don't have the technical and business specialists on staff to implement ERP solutions themselves
- Most SMEs don't have the time to define functional requirements so they can drive a selection process
- Most SMEs don't know what's truly possible with an ERP system
- Most SMEs don't spend enough time getting to the root of process requirements



# Why NEXUSsoft?



We have been doing this for a while



iCERP will capture your processes precisely



We will help you improve your processes



We provide a predictable cost structure



iCERP will grow, adapt and change with your business



We will compile your requirements for you to keep



## Finally

- None of our customers have moved from iCERP to another platform – ever.
- Our average tenure of customer is 8 years
- iCERP by NEXUSsoft is as individual as your business